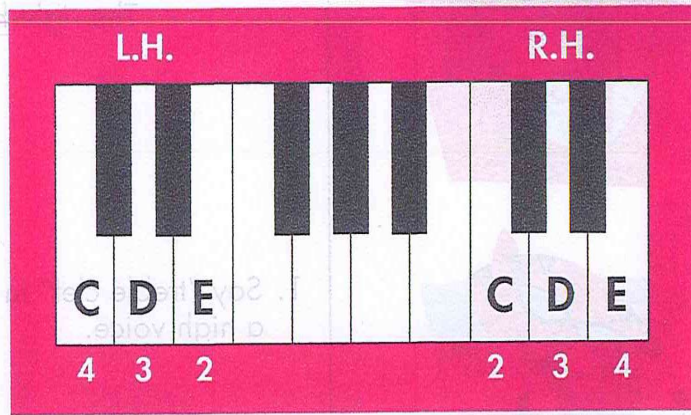


C-D-E Melody with Half Notes

Tips from your friends:

1. As your teacher plays, point to each note and say the **letter name**.
2. Write *f* or *p* for the animal before each verse.
3. Play and sing the finger numbers, letter names, or words.



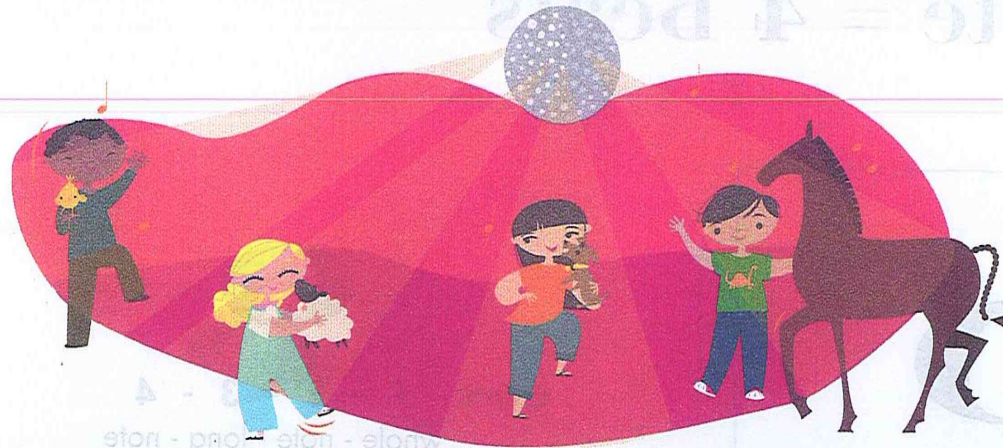
<input type="checkbox"/>	Mar - y	had	a	lit - tle	lamb,	lit - tle	lamb,	lit - tle	lamb,
<input type="checkbox"/>	Car - los	had	a	lit - tle	horse,	lit - tle	horse,	lit - tle	horse,
<input type="checkbox"/>	Ka - tie	had	a	lit - tle	dog,	lit - tle	dog,	lit - tle	dog,
<input type="checkbox"/>	Dal - las	had	a	lit - tle	chick,	lit - tle	chick,	lit - tle	chick,

Traditional, words adapted

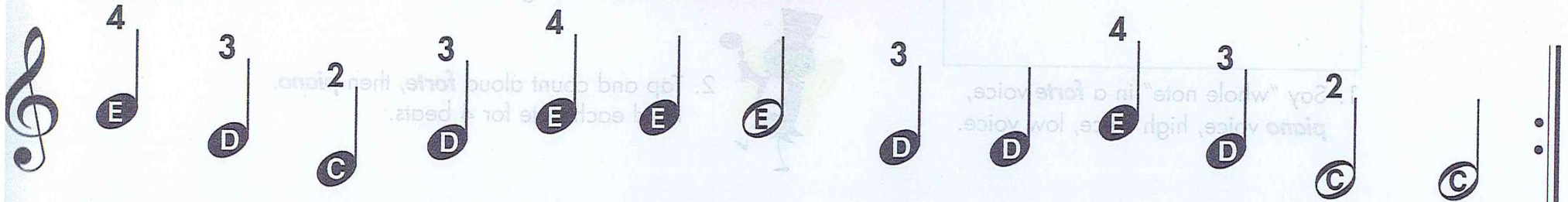
L.H.

Teacher Duet: (Student plays HIGHER on the keyboard.)





R.H.



Mar - y had a lit - tle lamb, it was white as snow - flakes.
 Car - los had a lit - tle horse, it was brown as choc - 'late.
 Ka - tie had a lit - tle dog, it was black as mid - night.
 Dal - las had a lit - tle chick, it was bright as sun - shine.

NEW! **GRAND STAFF GAMES**

Turn to p. 86 and learn about the grand staff.